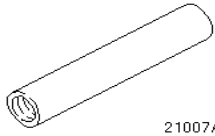


Selector Mechanism - Dismantle and Assemble (16 284 8)

Special Tools

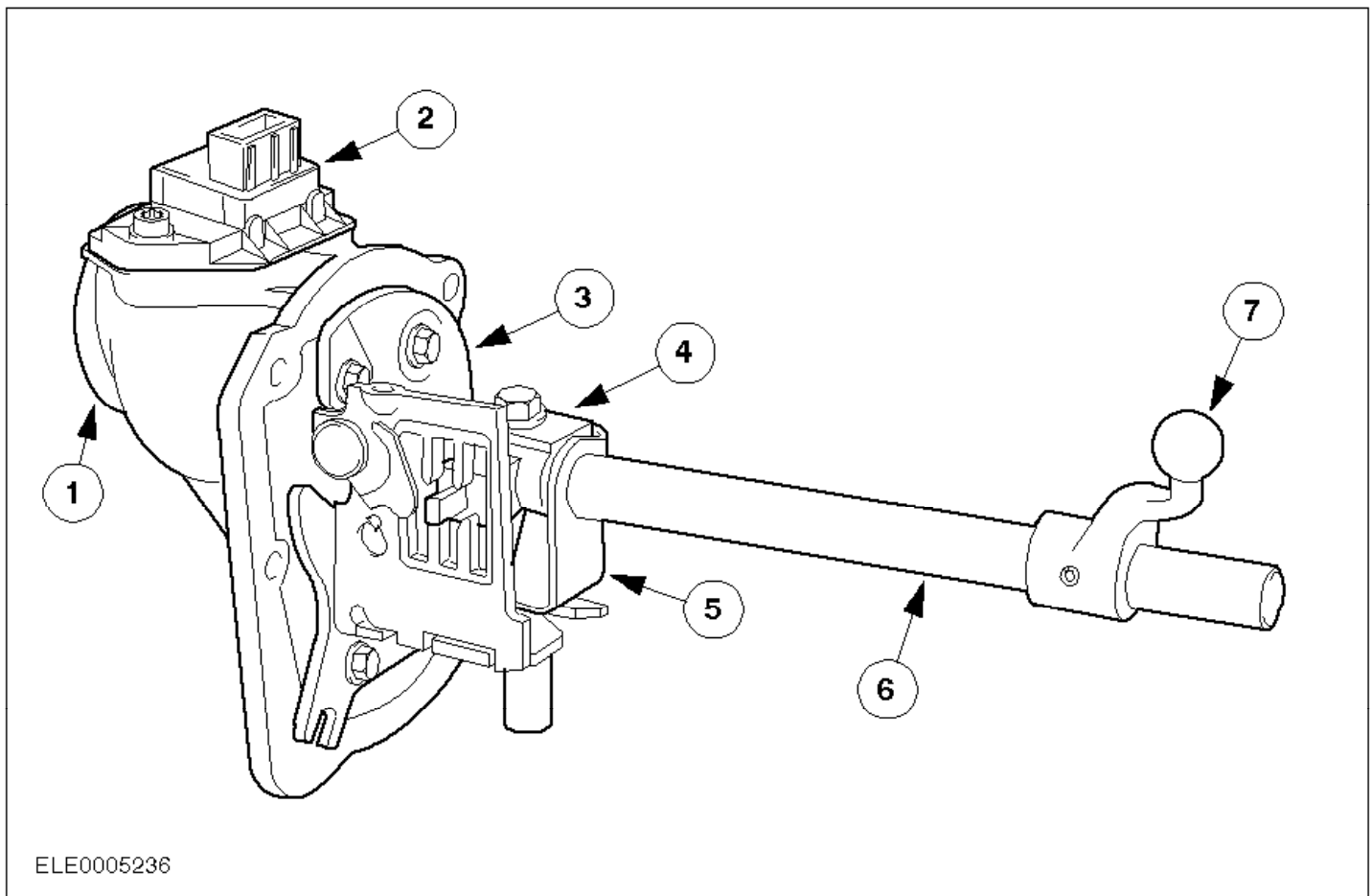


21007A

21-007 Alnstaller, selector gate clamp ring

Materials

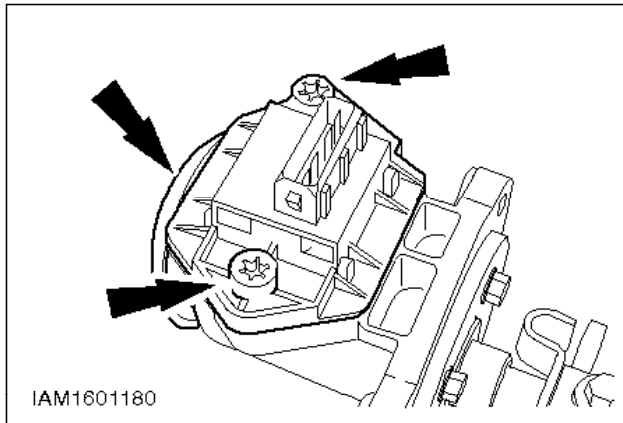
Thread locking material	SDM-4G-9105-A
-------------------------	---------------



Layout of internal gearshift mechanism

Item	Description
1	Transmission vent rubber plugs
2	Reversing light switch

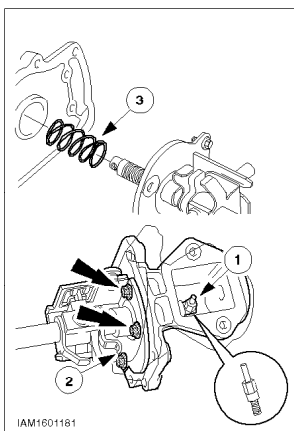
3	Selector gate
4	Gear selector boss
5	Gear selector boss bracket
6	Selector shaft
7	Selector ball



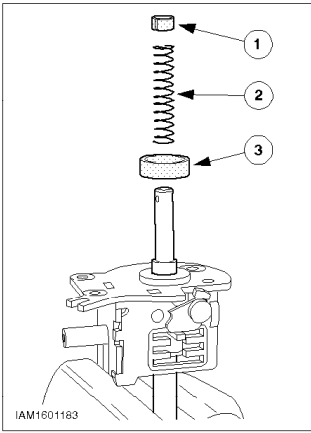
Dismantle

- 1. Remove the reversing light switch (two bolts).

Pull out the transmission vent rubber plugs.

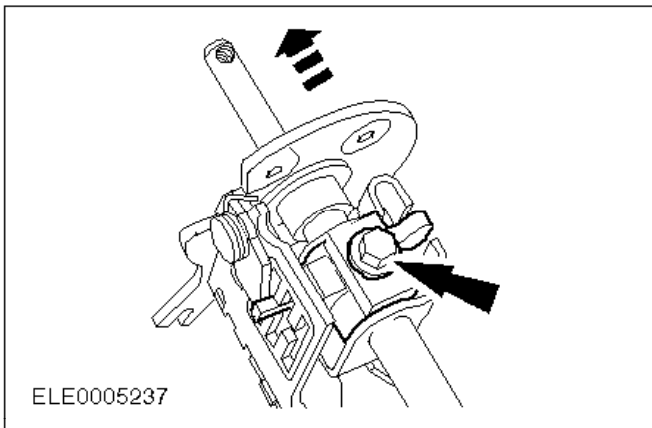


- 2. Detach the selector gate from the cover plate of the internal gearshift mechanism.
 - 1 Screw the reversing lamp switch operating pin out of the selector shaft.
 - 2 Detach the selector gate from the cover plate of the internal gearshift mechanism (four bolts).
 - 3 Take out the outer spring.



⌚ 3. Remove the clamp ring, compression spring and spring retainer from the selector shaft.

- 1 Expand the clamp ring and pull it off.
- 2 Take off the spring.
- 3 Take off the spring retainer.



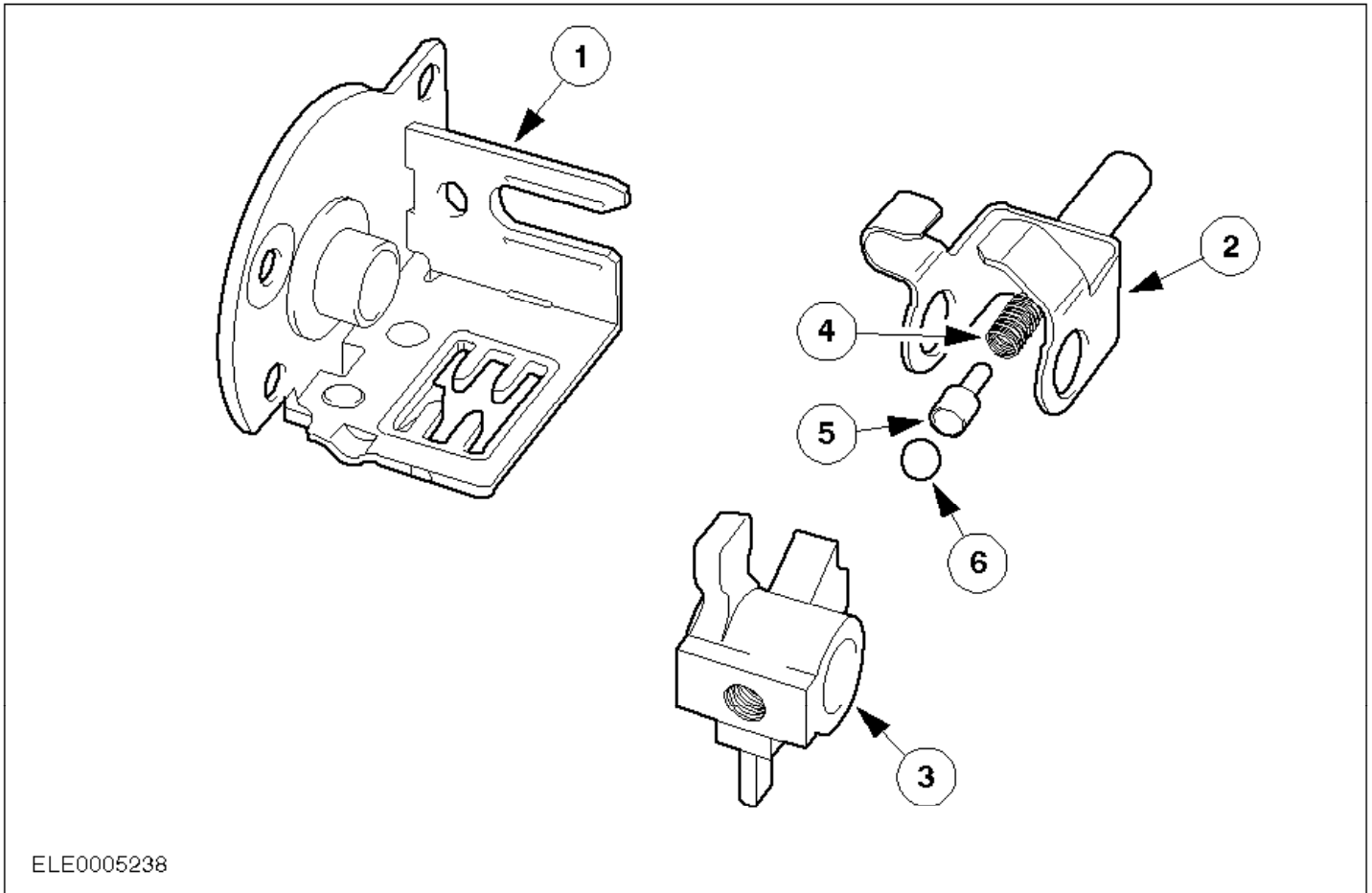
⌚ 4. Remove the selector gate assembly, gear selector boss and bracket from the selector shaft.



CAUTION:

The detent ball is spring-tensioned.

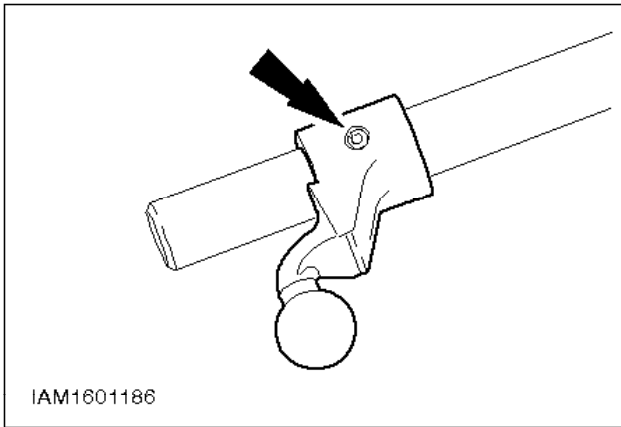
- Take out the gear selector boss bolt.
- Pull out the selector gear assembly.



Selector gate - dismantled

Item	Description
1	Selector gate
2	Gear selector boss bracket
3	Gear selector boss
4	Spring
5	Plunger
6	Ball detent

5. Dismantle the selector gate.
- Unhook the bracket and the gear selector boss from the selector gate.
 - Carefully pull off the gear selector boss from the bracket.
 - Take off the ball detent, plunger and spring.



6. Detach the selector ball from the selector shaft.

Note:

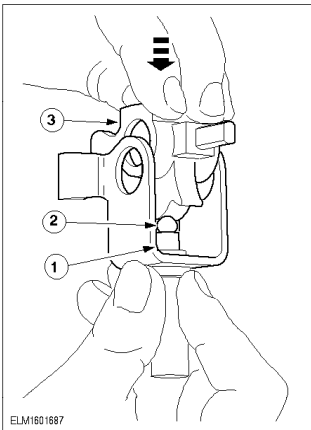
Mark the installation position of the selector ball on the shaft.

- Drive out the roll pin using a pin punch.
- Take the ball detent off the selector shaft.

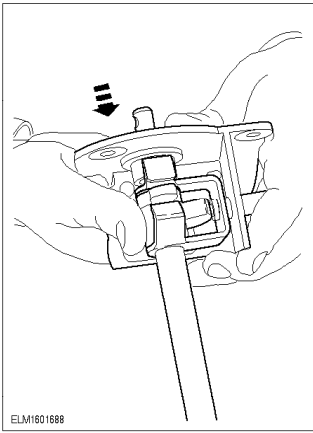
Assemble

7. Fit the ball detent and the new roll pin to the selector shaft.

Tension the selector shaft in the vice.

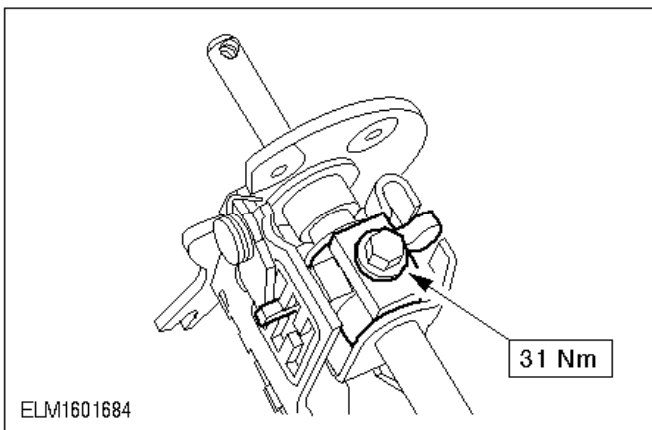


8. Assemble the gear selector boss and the bracket.
- 1 Insert the spring and the plunger in the bracket.
 - 2 Fit the ball detent.
 - 3 Locate the gear selector boss in the bracket.
9. Insert the gear selector boss and the bracket in the selector gate.

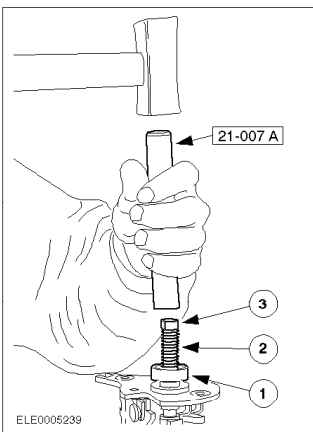


- 10. Fit the selector gate assembly to the selector shaft.

Push the selector gate assembly onto the selector shaft.

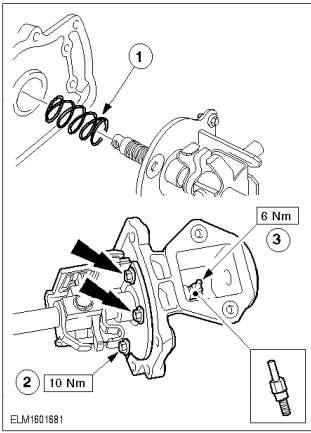


- 11. Secure the gear selector boss and the bolt to the selector shaft.



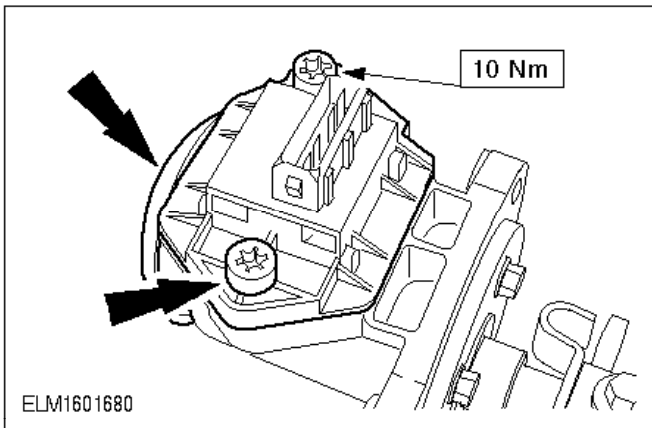
- 12. Fit the spring retainer and the spring compression with the clamp ring.

- 1 Spring retainer
 - 2 Compression spring
 - 3 Clamp ring
- Drive the clamp ring in using the installer until the hole in the shaft is free.



➤ 13. Fit the selector gate to the internal gearshift mechanism cover plate.

- 1 Fit the outer spring to the spring retainer.
- 2 Fit the selector gate to the internal gearshift mechanism cover plate (four bolts).
- 3 Screw in the reversing lamp switch operating pin and tighten it in place.



➤ 14. Fit the reversing light switch (two bolts).
Install the transmission vent rubber plugs.
